



FLOOR PLANS

FLOOR PLAN - LOWER GROUND FLOOR



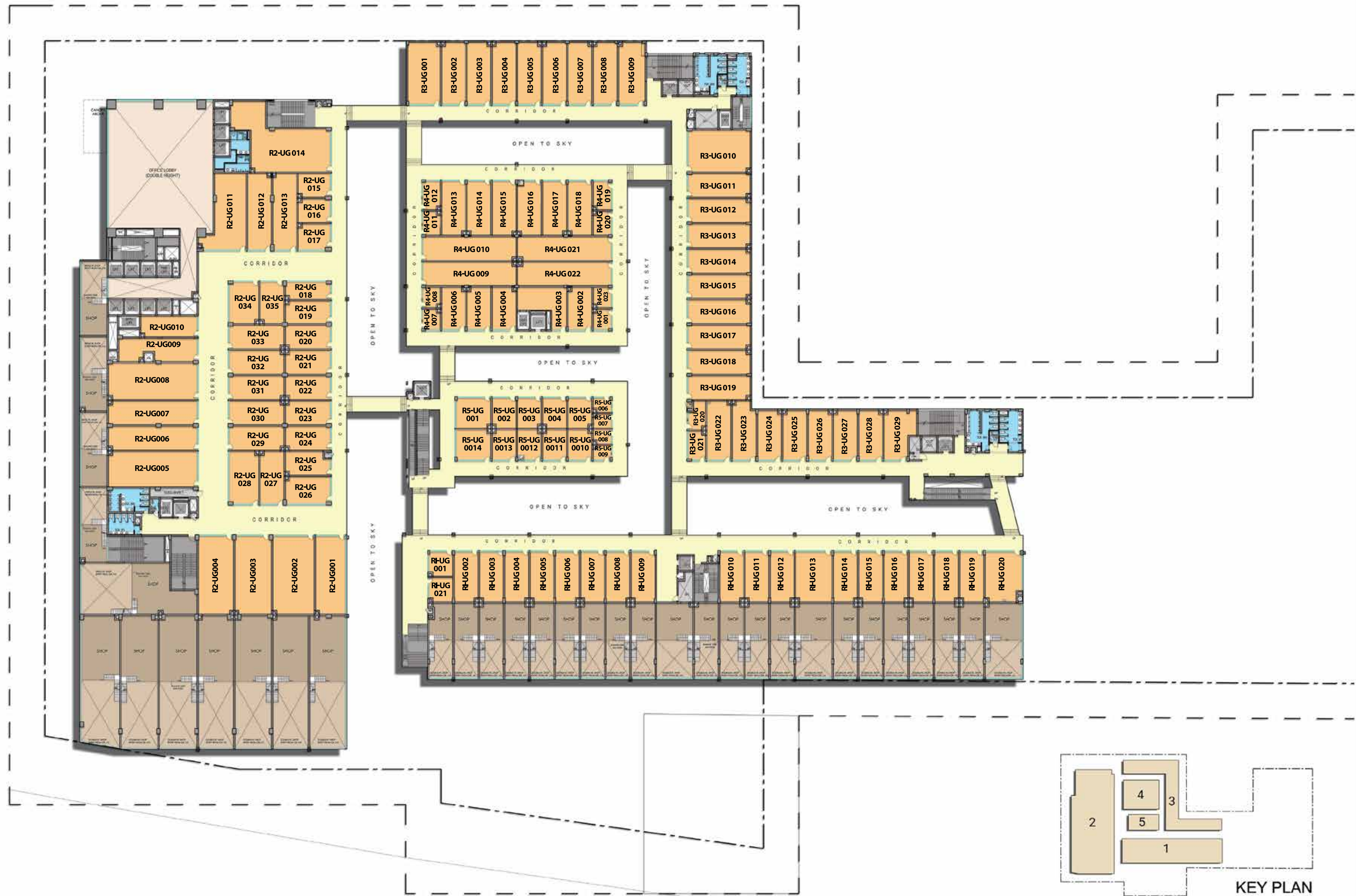
Disclaimer: Floor plan / site plan / unit plan, as the case may be and as the situation and circumstances so warrant is to be read in conjunction with (i) License No. 121 of 2008 dated 14.06.2008(as renewed upto date); (ii) HRERA Registration No. 17 of 2018 dated 24.01.2018; (iii) Approved Building plans and revisions thereto / thereof. Measurement herein are approximate and are for illustrative purposes only. Information herein may contain technical inaccuracies or typographical errors. While Promoter does not doubt the plans accuracy, no guarantee, warranty or representation as to the accuracy and completeness is being made. Allottee and/or its advisors should conduct a careful, independent investigation to its / their satisfaction. Plan(s) is/are intended to give a general indication of the proposed layout only. Site plans and landscaping are not intended to form part of any contract or warranty unless specifically incorporated in writing into the contract. Minor inaccuracies in square footage and inaccuracies in layout and room dimensions as shown on any plan will not excuse the Allottee from completing the purchase of the Unit without abatement in price and/or recourse against the Promoter. Dimensions are not intended to form part of any contract or warranty unless specifically incorporated in writing into the contract. Specification is/are not intended to form part of any contract or warranty unless specifically incorporated in writing into the contract. Promoter may make such minor additions or alterations as may be required by the Allottee, or such minor changes or alterations as per the provisions of the Act and Rules made thereunder or as per the approvals/ instructions/ guidelines of the Competent Authorities, or such other changes as may be required to make the enjoyment of the Project comfortable and convenient for the allottees/ occupants/ users at large.
 1 Hect. =2.471 Acres, 1 Acre=4840 sq.yds, or 4046.864 sq. mtrs., 1 sq.mtr.=10.764 sq.ft.

FLOOR PLAN - GROUND FLOOR



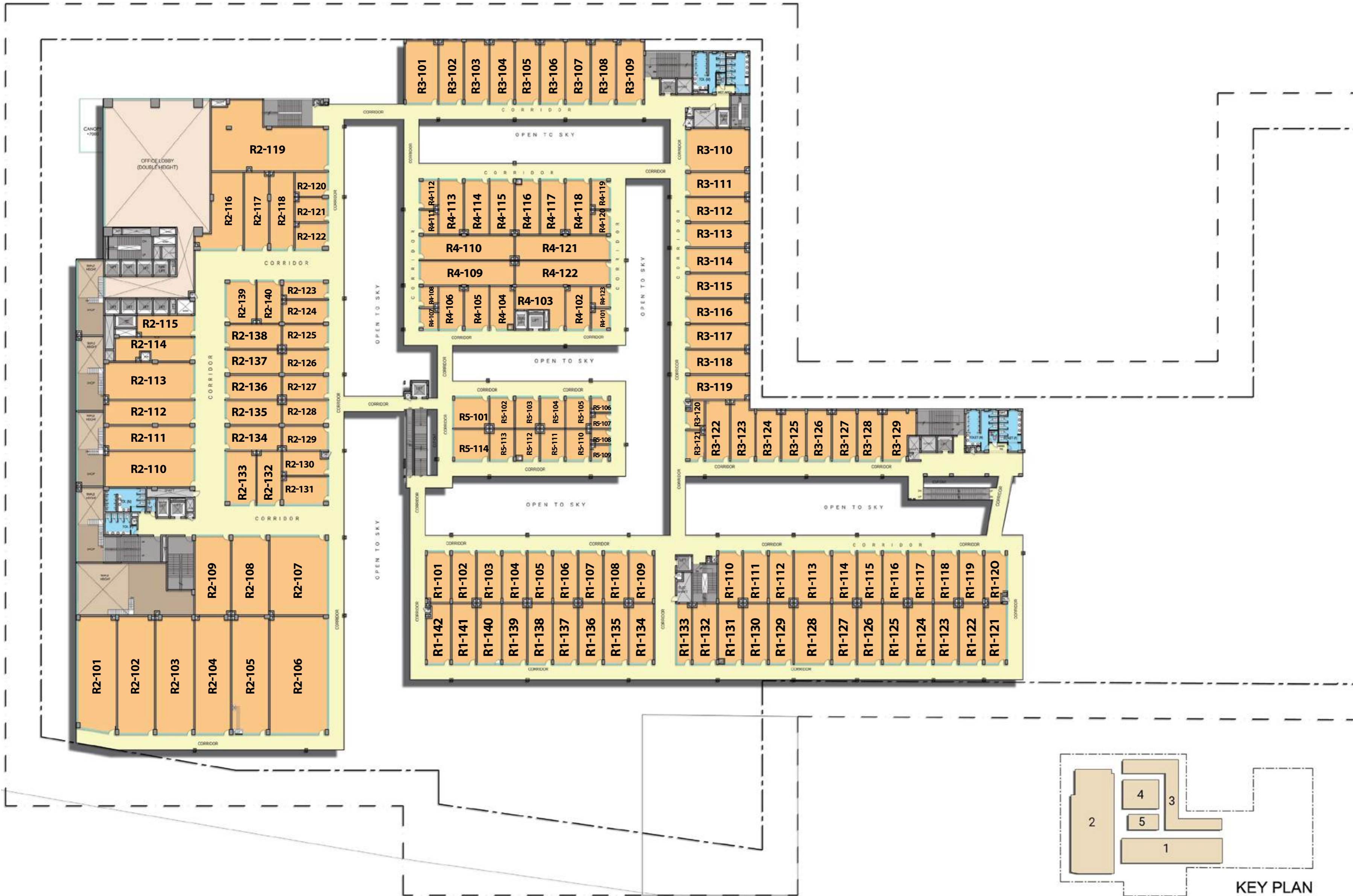
Disclaimer: Floor plan / site plan / unit plan, as the case may be and as the situation and circumstances so warrant is to be read in conjunction with (i) License No. 121 of 2008 dated 14.06.2008(as renewed upto date); (ii) HRERA Registration No. 17 of 2018 dated 24.01.2018; (iii) Approved Building plans and revisions thereto / thereof. Measurement herein are approximate and are for illustrative purposes only. Information herein may contain technical inaccuracies or typographical errors. While Promoter does not doubt the plans accuracy, no guarantee, warranty or representation as to the accuracy and completeness is being made. Allottee and/or its advisors should conduct a careful, independent investigation to its / their satisfaction. Plan(s) is/are intended to give a general indication of the proposed layout only. Site plans and landscaping are not intended to form part of any contract or warranty unless specifically incorporated in writing into the contract. Minor inaccuracies in square footage and inaccuracies in layout and room dimensions as shown on any plan will not excuse the Allottee from completing the purchase of the Unit without abatement in price and/or recourse against the Promoter. Dimensions are not intended to form part of any contract or warranty unless specifically incorporated in writing into the contract. Specification is/are not intended to form part of any contract or warranty unless specifically incorporated in writing into the contract. Promoter may make such minor additions or alterations as may be required by the Allottee, or such minor changes or alterations as per the provisions of the Act and Rules made thereunder or as per the approvals/ instructions/ guidelines of the Competent Authorities, or such other changes as may be required to make the enjoyment of the Project comfortable and convenient for the allottees/ occupants/ users at large.
 1 Hect. =2.471 Acres, 1 Acre=4840 sq.yds. or 4046.864 sq. mtrs., 1 sq.mtr.=10.764 sq.ft.

FLOOR PLAN - UPPER GOURND FLOOR



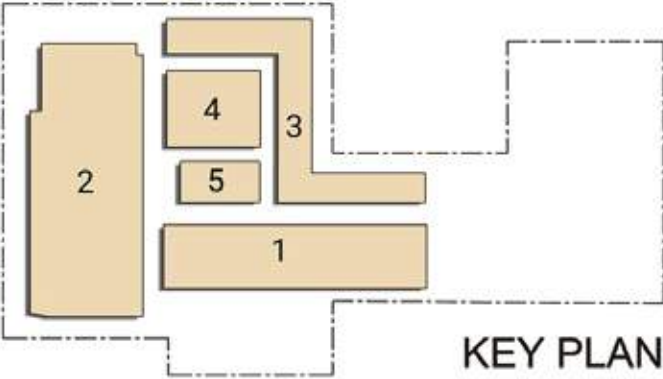
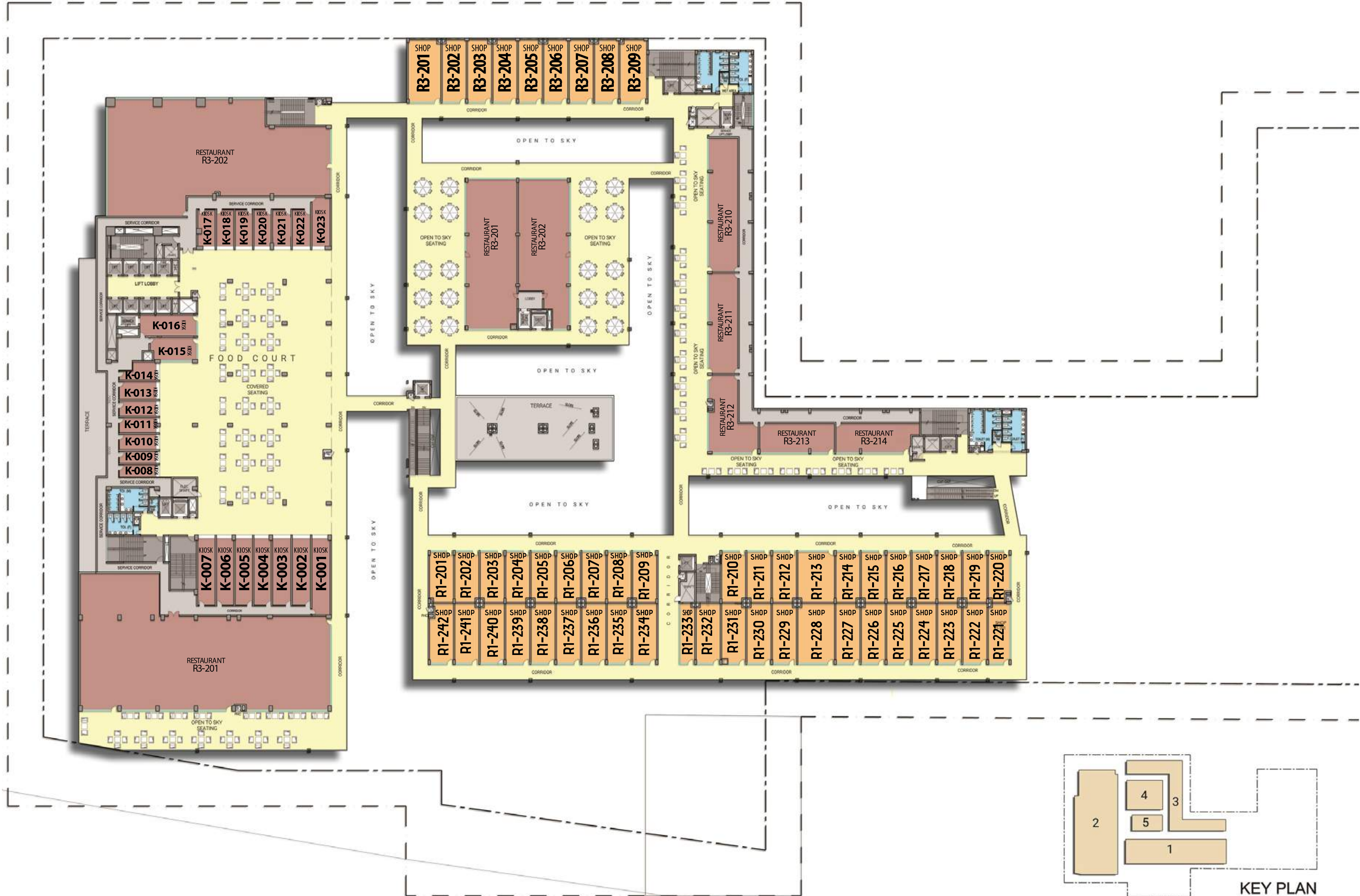
Disclaimer: Floor plan / site plan / unit plan, as the case may be and as the situation and circumstances so warrant is to be read in conjunction with (i) License No. 121 of 2008 dated 14.06.2008(as renewed upto date); (ii) HRERA Registration No. 17 of 2018 dated 24.01.2018; (iii) Approved Building plans and revisions thereto / thereof. Measurement herein are approximate and are for illustrative purposes only. Information herein may contain technical inaccuracies or typographical errors. While Promoter does not doubt the plans accuracy, no guarantee, warranty or representation as to the accuracy and completeness is being made. Allottee and/or its advisors should conduct a careful, independent investigation to its / their satisfaction. Plan(s) is/are intended to give a general indication of the proposed layout only. Site plans and landscaping are not intended to form part of any contract or warranty unless specifically incorporated in writing into the contract. Minor inaccuracies in square footage and inaccuracies in layout and room dimensions as shown on any plan will not excuse the Allottee from completing the purchase of the Unit without abatement in price and/or recourse against the Promoter. Dimensions are not intended to form part of any contract or warranty unless specifically incorporated in writing into the contract. Specification is/are not intended to form part of any contract or warranty unless specifically incorporated in writing into the contract. Promoter may make such minor additions or alterations as may be required by the Allottee, or such minor changes or alterations as per the provisions of the Act and Rules made thereunder or as per the approvals/ instructions/ guidelines of the Competent Authorities, or such other changes as may be required to make the enjoyment of the Project comfortable and convenient for the allottees/ occupants/ users at large.
 1 Hect. =2.471 Acres, 1 Acre=4840 sq.yds. or 4046.864 sq. mtrs., 1 sq.mtr.=10.764 sq.ft.

FLOOR PLAN - FIRST FLOOR



Disclaimer: Floor plan / site plan / unit plan, as the case may be and as the situation and circumstances so warrant is to be read in conjunction with (i) License No. 121 of 2008 dated 14.06.2008(as renewed upto date); (ii) HRERA Registration No. 17 of 2018 dated 24.01.2018; (iii) Approved Building plans and revisions thereto / thereof. Measurement herein are approximate and are for illustrative purposes only. Information herein may contain technical inaccuracies or typographical errors. While Promoter does not doubt the plans accuracy, no guarantee, warranty or representation as to the accuracy and completeness is being made. Allottee and/or its advisors should conduct a careful, independent investigation to its / their satisfaction. Plan(s) is/are intended to give a general indication of the proposed layout only. Site plans and landscaping are not intended to form part of any contract or warranty unless specifically incorporated in writing into the contract. Minor inaccuracies in square footage and inaccuracies in layout and room dimensions as shown on any plan will not excuse the Allottee from completing the purchase of the Unit without abatement in price and/or recourse against the Promoter. Dimensions are not intended to form part of any contract or warranty unless specifically incorporated in writing into the contract. Specification is/are not intended to form part of any contract or warranty unless specifically incorporated in writing into the contract. Promoter may make such minor additions or alterations as may be required by the Allottee, or such minor changes or alterations as per the provisions of the Act and Rules made thereunder or as per the approvals/ instructions/ guidelines of the Competent Authorities, or such other changes as may be required to make the enjoyment of the Project comfortable and convenient for the allottees/ occupants/ users at large.
 1 Hect. =2.471 Acres, 1 Acre=4840 sq.yds. or 4046.864 sq. mtrs., 1 sq.mtr.=10.764 sq.ft.

FLOOR PLAN - SECOND FLOOR



Disclaimer: Floor plan / site plan / unit plan, as the case may be and as the situation and circumstances so warrant is to be read in conjunction with (i) License No. 121 of 2008 dated 14.06.2008(as renewed upto date); (ii) HRERA Registration No. 17 of 2018 dated 24.01.2018; (iii) Approved Building plans and revisions thereto / thereof. Measurement herein are approximate and are for illustrative purposes only. Information herein may contain technical inaccuracies or typographical errors. While Promoter does not doubt the plans accuracy, no guarantee, warranty or representation as to the accuracy and completeness is being made. Allottee and/or its advisors should conduct a careful, independent investigation to its / their satisfaction. Plan(s) is/are intended to give a general indication of the proposed layout only. Site plans and landscaping are not intended to form part of any contract or warranty unless specifically incorporated in writing into the contract. Minor inaccuracies in square footage and inaccuracies in layout and room dimensions as shown on any plan will not excuse the Allottee from completing the purchase of the Unit without abatement in price and/or recourse against the Promoter. Dimensions are not intended to form part of any contract or warranty unless specifically incorporated in writing into the contract. Specification is/are not intended to form part of any contract or warranty unless specifically incorporated in writing into the contract. Promoter may make such minor additions or alterations as may be required by the Allottee, or such minor changes or alterations as per the provisions of the Act and Rules made thereunder or as per the approvals/ instructions/ guidelines of the Competent Authorities, or such other changes as may be required to make the enjoyment of the Project comfortable and convenient for the allottees/ occupants/ users at large.
 1 Hect. =2.471 Acres, 1 Acre=4840 sq.yds. or 4046.864 sq. mtrs., 1 sq.mtr.=10.764 sq.ft.